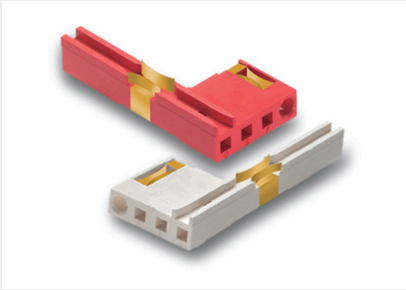


CPCI-TX SERIES™

Transition Guides for CompactPCI® Applications

- IEEE 1101.10 and PICMG 2.0 Compliant transition guide
- Simple snap-in installation in industry standard extrusions
- Polarity keying compatible for proprietary or standard schemes
- Conductive inserts available for ESD, Hot Swap and polarity compatibility
- Available in white and red for easy identification of systems slot
- Available with 10% glass-filled ABS for added rigidity (*subject to minimum order*)



cPCI-Tx Series™ introduced to meet the upgraded and stringent requirements of IEEE 1101.10 and PICMG 2.0 CompactPCI specifications. Supports rear I/O and modified architectures. Rigid, strong and economical, CPCI-Tx's provide the specification compliance and installed reliability that your most demanding rack-mounted products require. Retention is firm and there are no special tools or fixtures required for installation. Hot Swap compatible, ESD grounding and IEEE 1101.10 compliant ejectors are available on pages 1 through 3.

Mounting Information:

Extrusions or Metal Plates: 0.047" - 0.090" (1.2mm - 2.3mm) thick
Hole Size: 0.125" (3.2mm) diameter + 0.003 (0.08mm) - 0.001 (0.03mm) on 0.200" (5.08mm) centers

Material Specifications:

UL Rated 94V-0, ABS
Oxygen Index: +28%

Application Notes:

Blind holes are provided as standard for additional self-tapping mounting screws if desired

Ordering Instructions:

Part Number: CPCI-T XX

Replace "XX" with the following suffix to complete part number:

- RD-T Red, Top (ABC)
- NT-T Natural / White color, Top (ABC)
- RD-B Red, Bottom (DEF)
- NT-B Natural / White, Bottom (DEF)
- RD-T-ESD Red, Top (ABC) with ESD grounding clip
- NT-T-ESD Natural / White Top (ABC) with ESD grounding clip
- RD-B-ESD Red, Bottom (DEF) with ESD grounding clip
- NT-B-ESD Natural / White, Bottom (DEF) with ESD grounding clip

