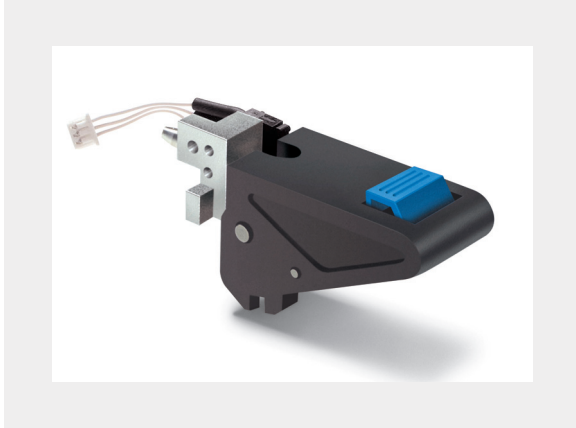


CPCI-E2 SERIES™

Large Push Button, Locking Ejector for CompactPCI® Assemblies

- IEEE 1101.10 and PICMG 2.0 Compliant
- Innovative positive locking, simple push button release
- Ergonomically designed for maximum functionality
- Supports ESD contact and Hot Swap (*optional micro-switch*)
- Custom colors available (*subject to minimum order*)



cPCI-E2™ was introduced to meet the upgraded and stringent requirements of IEEE 1101.10 and PICMG 2.0 Compact PCI specifications. The CPCI-E2 provides a simpler and more economical locking ejector assembly by incorporating an integral leaf spring made from Norel™, an engineering polymer. The locking mechanism construction assures years of reliable use and positive locking. There are no special tools or fixtures required for installation.

Mounting Information:

Extrusions or Face Plates: 0.090" - 0.110" (2.3mm - 2.8mm) thick.
All required hardware for installation is provided

Material Specifications:

Handle: UL Rated 94V-0, Black, Norel™
Push Button: UL Rated 94V-0, Blue, 10% Glass Filled ABS
Oxygen Index: +28%
Hinge Block: Die-cast zinc alloy

Application Notes:

Compatible with 6U and 3U cards of both 4HP and 8HP widths
See pages 5 through 6 for recommended faceplate dimensions and mounting.

Ordering Instructions:

Part Number: CPCI-E2- X
Replace "X" with one of the following suffixes:

- | | |
|------|---|
| T | Top position ejector |
| B | Bottom position ejector |
| B-HS | Bottom Hot Swap micro-switch ejector w/ cable |

