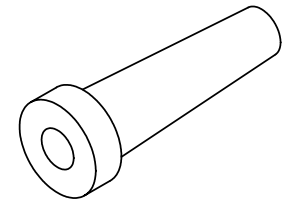
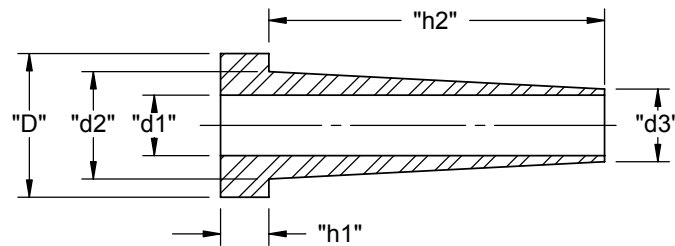


PART NO.	"d2"	"h1"	"d1" NOMINAL DIA.	"h2"	"D"	"d3"
RGS3-40016	.280 [7.1]	.102 [2.6]	.157 [4.0]	.858 [21.8]	.374 [9.5]	.213 [5.4]
RGS3-15517	.303 [7.7]	.094 [2.4]	.157 [4.0]	1.531 [38.9]	.406 [10.3]	.220 [5.6]
RGS3-12463	.366 [9.3]	.063 [1.6]	.268 [6.8]	1.417 [36.0]	.453 [11.5]	.366 [9.3]
RGS3-60218	.378 [9.6]	.063 [1.6]	.244 [6.2]	1.626 [41.3]	.551 [14.0]	.315 [8.0]
RGS3-60752	.445 [11.3]	.126 [3.2]	.311 [7.9]	1.500 [38.1]	.563 [14.3]	.413 [10.5]
RGS3-12464	.559 [14.2]	.126 [3.2]	.406 [10.3]	1.500 [38.1]	.752 [19.1]	.500 [12.7]



NOTES:  
1. MATERIAL: PVC (RMS-25)  
2. COLOR: BLACK

TITLE: <b>RICHCO GROMMET SLEEVE - TYPE 3</b>						DWG IN IN [MM]		
CREATED USING SOLIDWORKS		FILE #: RGS3	DWN: S.J.	APP:				FINAL
TOLERANCES UNLESS NOTED .XX=±.020 .XXX=±.015 FRAC.=±1/32 ANG.=±1°		SHEET: 1 OF 1	SHEET SIZE: A	DT: 07.15.02	CHKD:		PART #	PRINT TYPE
RE: RICHCO, INC.		RICHCO, INC. ENG@RICHCO-INC.COM (773) 539-4060		SEE TABLE		CA		
REV.	DESCRIPTION	ENGR.	DATE					

C	SEE ECN #1060 FOR CHANGES	SK	09/23/05
B	SEE ECN #606 FOR CHANGES	SM	03.31.03
A	SEE ECN #541 FOR CHANGES	SM	12.12.02
REV.	DESCRIPTION	ENGR.	DATE