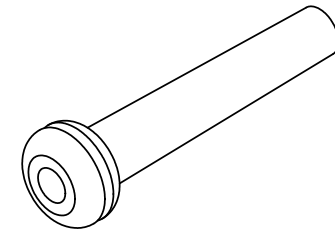
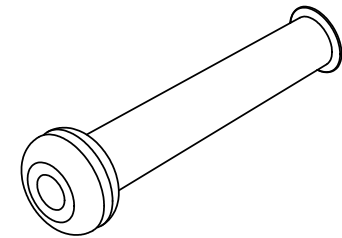
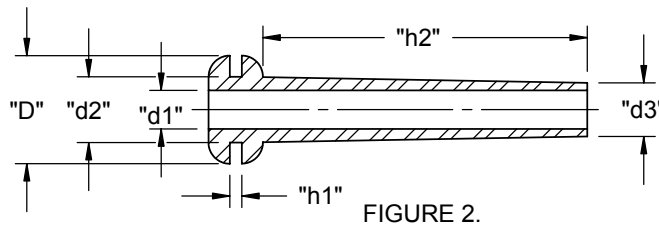
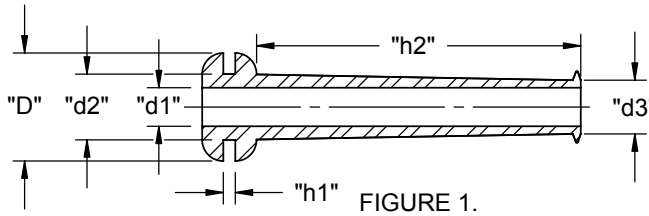


PART NO.	"d2"	"h1"	"d1" NOMINAL DIA.	"h2"	"D"	"d3"	FIGURE NO.
RGS1-12461	.299 (7.6)	.150 (3.8)	.240 (6.1)	1.248 (31.7)	.559 (14.2)	.311 (7.9)	1
RGS1-60466	.343 (8.7)	.063 (1.6)	.201 (5.1)	1.689 (42.9)		.280 (7.1)	2
RGS1-50687	.374 (9.5)	.094 (2.4)	.252 (6.4)	.563 (14.3)		.311 (7.9)	
RGS1-12468		.102 (2.6)		.906 (23.0)	.551 (14.0)		



NOTES:
1. MATERIAL: PVC (RMS-25)
2. COLOR: BLACK

TITLE: RICHCO GROMMET SLEEVE - TYPE 1						DWG IN IN [MM]	
CREATED USING SOLIDWORKS	FILE #: RGS1	DWN: S.J.	APP:	FINAL			
TOLERANCES UNLESS NOTED .XX=±.020 .XXX=±.015 FRAC.=±1/32 ANG.=±1°	SHEET: 1 OF 1	SHEET SIZE: A	DT: 07.15.02	CHKD:	PART #	PRINT TYPE	
RE: RICHCO, INC.	RICHCO, INC. ENG@RICHCO-INC.COM (773) 539-4060		SEE TABLE		CA		

REV.	DESCRIPTION	ENGR.	DATE
B	SEE ECN #606 FOR CHANGES	SM	03.31.03
A	SEE ECN #541 FOR CHANGES	SM	12.12.02