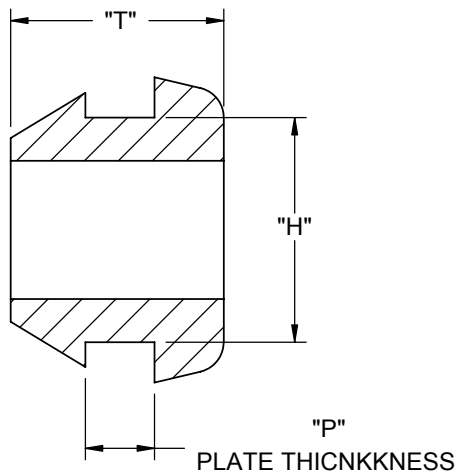
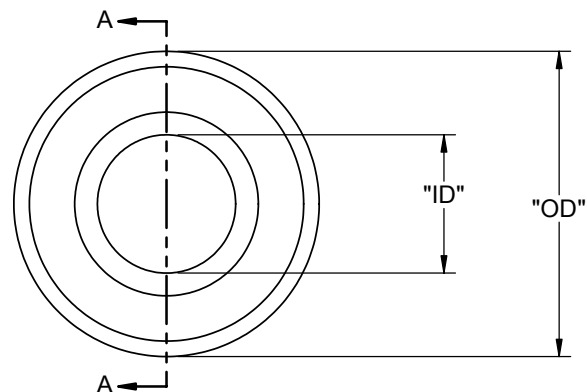




PART NO. "T"=.32 [8] "P"=.06 [1.5]	PART NO. "T"=.37 [9.5] "P"=.12 [3]	HOLE SIZE "H"	INSIDE DIAMETER "ID"	OUTSIDE DIAMETER "OD"
QFG-16200	QFG-16220	.39 [10]	.24 [6]	.53 [13.5]
QFG-16201	QFG-16221	.43 [11]	.28 [7]	.57 [14.5]
QFG-16202	QFG-16222	.47 [12]	.32 [8]	.61 [15.5]
QFG-16203	QFG-16223	.55 [14]	.39 [10]	.69 [17.5]
QFG-16204	QFG-16224	.63 [16]	.47 [12]	.77 [19.5]
QFG-16205	QFG-16225	.71 [18]	.55 [14]	.85 [21.5]
QFG-16207	QFG-16227	.87 [22]	.71 [18]	1.00 [25.4]
QFG-16208	QFG-16228	1.02 [26]	.87 [22]	1.16 [29.5]
QFG-16209	QFG-16229	1.10 [28]	.94 [24]	1.24 [31.5]



SECTION A-A
SCALE 3 : 1



- NOTES:
1. MATERIAL: PVC (RMS-25)
2. COLOR: BLACK.

TITLE: QUICK-FIT GROMMET						DWG IN IN [MM]	
CREATED USING SOLIDWORKS	FILE #: QFG	DWN: SK	APP: RT	FINAL			
TOLERANCES UNLESS NOTED .XX=±.010 .XXX=±.005 FRAC.=±1/64 ANG.=±1°	SHEET: 1 OF 1	SHEET SIZE: A	DT: 10/11/05	CHKD: DZ	PART #	PRINT TYPE	
	RE: RICHCO, INC.	RICHCO, INC. ENG@RICHCO-INC.COM (773) 539-4060		SEE TABLE	CA		

REV.	DESCRIPTION	ENGR.	DATE
D	COMPLETELY REDRAWN, SEE ECN #1074	SK	10/11/05
-	SEE ENGINEERING FOR REV A-C	---	---