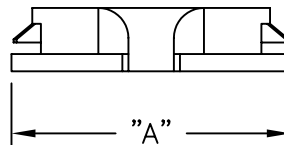
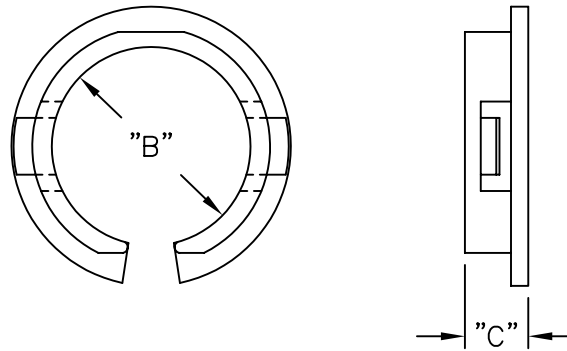


PART NO.	PANEL THKNS. RANGE	HOLE DIAMETER	"A" REF.	MAX HOLDING BUNDLE DIA. "B"	"C"	PACKAGE
PGSA-0407A	.016-.039 (0.4-1.0)	.272 (6.9)	.39 (9.8)	.19 (4.8)	.20 (5.0)	1000
PGSA-1013A	.039-.059 (1.0-1.5)	.512 (13.0)	.61 (15.5)	.38 (9.6)	.21 (5.4)	500
PGSA-1316A	.039-.055 (1.0-1.4)	.630 (16.0)	.72 (18.4)	.49 (12.5)	.21 (5.4)	
PGSA-1519A	.039-.059 (1.0-1.5)	.748 (19.0)	.86 (21.8)	.59 (14.9)	.22 (5.7)	
PGSA-1822A	.031-.063 (0.8-1.6)	.866 (22.0)	.97 (24.6)	.69 (17.6)	.22 (5.6)	
PGSA-2024A1	.031-.039 (0.8-1.0)	.945 (24.0)	1.02 (26.0)	.79 (20.0)	.21 (5.4)	
PGSA-2024A	.039-.047 (1.0-1.2)		1.02 (26.0)	.79 (20.0)	.21 (5.3)	
PGSA-2327A	.016-.039 (0.4-1.0)	1.063-1.071 (27.0-27.2)	1.20 (30.6)	.91 (23.0)	.24 (6.0)	200
PGSA-2529A	.016-.043 (0.4-1.1)	1.142 (29.0)	1.28 (32.6)	.98 (25.0)	.28 (7.0)	200



NOTES:

1. MATERIAL: NYLON 6/6 (RMS-01).
2. COLOR: BLACK.

TITLE: OPEN/CLOSED BUSHINGS [A SERIES]		DWG IN IN (MM)	FINAL	PRINT TYPE
TOLERANCES UNLESS NOTED .XX=±.010 .XXX=±.005 FRAC=±1/64 ANG=±1°	FILE # PGSA MAT'L: SEE NOTES RE: RICHCO, INC.	DWN: P.B. DT: 07-18-95	APP: DT:	CA
C	SEE ECN #686 FOR CHANGES	SM 08.18.03	PART # SEE TABLE	PRINT TYPE CA
B	SEE ECN #642 FOR CHANGES	SM 06.11.03		
A	CHANGED FILE NO. AND TITLE BLOCK	SM 08.21.02		
REV	DESCRIPTION	ENGR DATE		

RICHCO INC.
PO BOX 804238, CHICAGO, 60680
(773) 539-4060