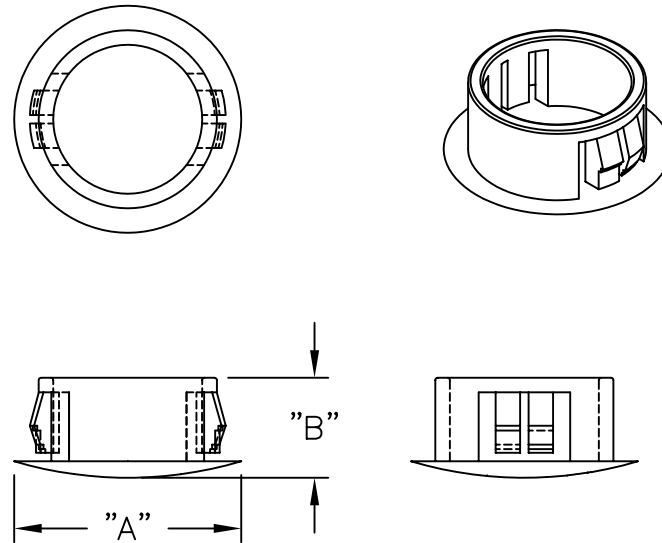


PART NO.	PANEL THKNS. MAX.	HOLE DIAMETER	"A" ±.02 (±0.5)	"B" REF.	PACKAGE
PGM-4	.063 (1.6)	.185-.193 (4.7-4.9)	.24 (6.0)	.20 (5.2)	1000
PGM-6		.248-.256 (6.3-6.5)	.30 (7.6)	.22 (5.6)	
PGM-7		.276-.280 (7.0-7.1)	.43 (11.0)	.28 (7.0)	
PGM-8		.299-.315 (7.6-8.0)	.37 (9.5)	.24 (6.0)	
PGM-9	.047 (1.2)	.374-.378 (9.5-9.6)	.51 (13.0)	.26 (6.5)	500
PGM-10	.055 (1.4)	.378-.394 (9.6-10.0)		.24 (6.0)	
PGM-13	.083 (2.1)	.500-.512 (12.7-13.0)	.67 (17.0)	.31 (8.0)	
PGM-16	.079 (2.0)	.626-.630 (15.9-16.0)	.79 (20.0)	.30 (7.7)	
PGM-19	.126 (3.2)	.744-.748 (18.9-19.0)	.93 (23.5)	.41 (10.5)	200
PGM-22	.118 (3.0)	.862-.866 (21.9-22.0)	1.02 (26.0)	.38 (9.6)	
PGM-25	.126 (3.2)	1.000-.1.008 (25.4-25.6)	1.10 (28.0)	.50 (12.7)	
PGM-30		1.201-1.205 (30.5-30.6)	1.34 (34.0)	.51 (13.0)	



NOTES:

1. MATERIAL: NYLON 6/6, (RMS-01).
2. COLOR: BLACK.
WHITE AVAILABLE BY SPECIAL ORDER ONLY.

TITLE: PUSH GROMMET HOLE PLUG [M SERIES]			DWG IN IN (MM)		FINAL	
D	SEE ECN #1040 FOR CHANGES	SK 08.23.05	TOLERANCES UNLESS NOTED .XX=±.010 .XXX=±.005 FRAC=±1/64 ANG=±1°	FILE # PGM	DWN: P.B.	APP:
C	SEE ECN #641 FOR CHANGES	SM 06.09.03		MAT'L: SEE NOTES	DT: 07-18-95	DT:
B	COMPLETELY REDRAWN, CHANGED FILE NO.	SM 01.03.02		RE: RICHCO, INC.	RICHCO INC. PO BOX 804238, CHICAGO, 60680 (773) 539-4060	
A	ADDED WHITE COLOR FOR SPECIAL ORDER	J.L. 9.2.99			PART # SEE TABLE	
REV	DESCRIPTION	ENGR DATE				PRINT TYPE CA