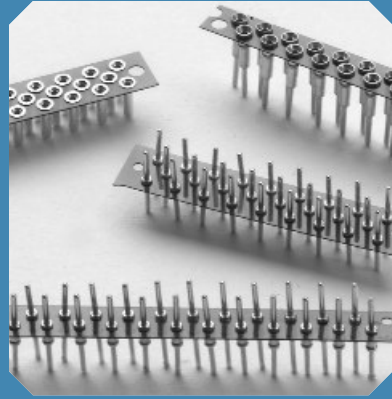
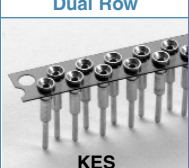
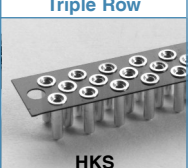
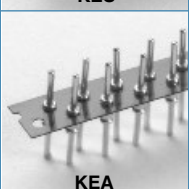
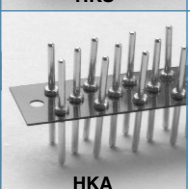


# Board to Board Connectors

# Board to Board Connectors Staggered .050/(1.27mm) Pitch • Peel-A-Way®

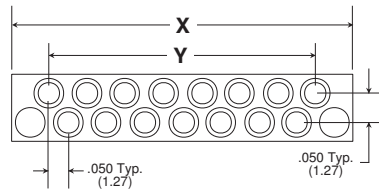


## Table of Models

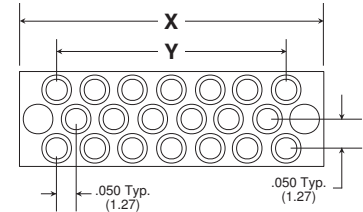
	Dual Row	Triple Row	
Female	 KES	 HKS	Description: Peel-A-Way® (KMS, KMD, KMT) Material: Polyimide Film Index: -269°C to 400°C (-452°F to 752°F)
Male	 KEA	 HKA	Description: Peel-A-Way® (KMA, KMB, KMC) Material: Polyimide Film Index: -269°C to 400°C (-452°F to 752°F)

## Dimensional Information

### Dual Row (ex. KES015-)



### Triple Row (ex. HKS020-)



# of Pins Total	X in. (mm)	Y in. (mm)
5	.400 (10.16)	.200 (5.08)
9	.600 (15.24)	.400 (10.16)
15	.900 (22.86)	.700 (17.78)
19	1.100 (27.94)	.900 (22.86)
25	1.400 (35.56)	2.450 (30.48)

# of Pins Total	X in. (mm)	Y in. (mm)
8	.400 (10.16)	.200 (5.08)
14	.600 (15.24)	.400 (10.16)
20	.800 (20.32)	.600 (15.24)
26	1.000 (25.40)	.800 (20.32)
35	1.300 (33.02)	1.100 (27.94)

## Features:

- Supplied in high temperature Peel-A-Way® removable terminal carrier.
- Female and male connectors are designed in mating pairs.
- .050/(1.27mm) row to row pitch.
- High reliability screw-machined terminals with closed-end construction for 100% anti-wicking of solder.
- Custom configurations available.

## Specifications:

### Terminals:

Brass - Copper Alloy  
(C36000) ASTM-B-16

### Contacts:

Beryllium Copper  
(C17200) ASTM-B-194

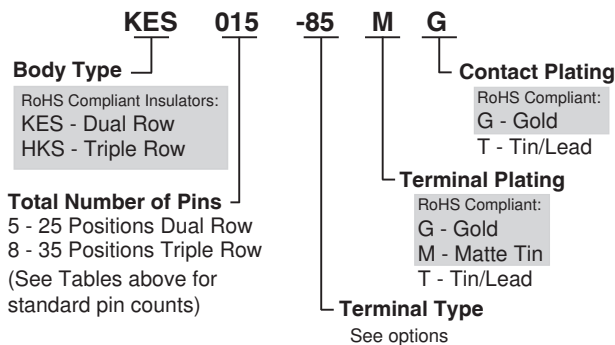
### Plating:

G - Gold over Nickel  
M - Matte Tin over Nickel  
T - Tin/Lead over Nickel

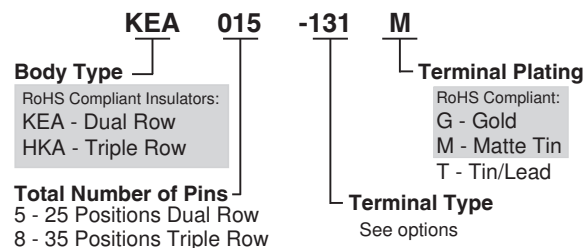
Gold per MIL-G-45204  
Matte Tin per ASTM545-97  
Tin/Lead per MIL-P-81728  
Nickel per QQ-N-290

## How To Order

### Female



### Male



Note: Terminals plated with Matte Tin are available only with Gold plated contacts.  
Quick-Turn delivery is not available on products with Matte Tin plating or Triple Row body types.

Products shown covered by patents issued and/or pending. Specifications subject to change without notice.



5 Energy Way, West Warwick, RI 02893 USA  
Tel: 800.424.9850 | 401.823.5200  
Fax: 401.823.8723  
info@advanced.com | www.advanced.com  
Cat. 16 Rev. 1

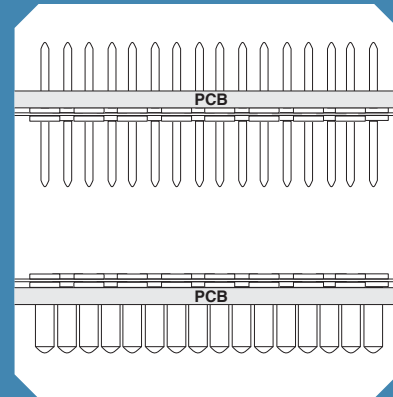
inch/(mm)

# Board to Board Connectors Staggered .050/(1.27mm) Pitch • Peel-A-Way®

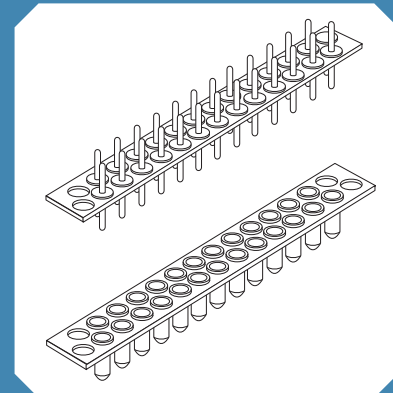


# Board to Board Connectors

Standard Female Quick-Turn Terminals		Additional standard and custom terminals available. See Terminals section or consult factory.
Type -85	Type -210	Type -246
<p>.058 Dia. (1.47) .031 J (.79) .155 (3.94) .038 Dia. (.97)</p>	<p>.058 Dia. (1.47) .015 J (.38) .155 (3.94) .034 Dia. (.86)</p>	<p>(mates with -526 only) (not Quick-Turn) .058 Dia. (1.47) .043 (1.09) .125 (3.18) .034 Dia. (.86)</p>

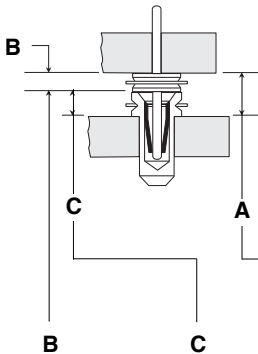


Standard Male Quick-Turn Terminals			
Type -131	Type -322	Type -321	Type -526
<p>.018 Dia. (.46) .037 Dia. (.94) .125 (3.18) .031 J (.79) .125 (3.18) .018 Dia. (.46)</p>	<p>.018 Dia. (.46) .037 Dia. (.94) .125 (3.18) .085 (2.16) .125 (3.18) .018 Dia. (.46)</p>	<p>(not Quick-Turn) .018 Dia. (.46) .037 Dia. (.94) .125 (3.18) .070 (1.78) .125 (3.18) .018 Dia. (.46)</p>	<p>(not Quick-Turn) .018 Dia. (.46) .110 (2.79) .040 Dia. (1.02) .050 (1.27)</p>

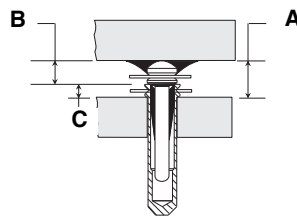


## Dimensional Information

**Figure 1**  
Thru-Hole



**Figure 2**  
Surface Mount



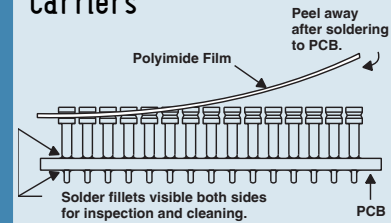
Order one each Male & Female to get the required "A" dim.

B	C	A	Male Part #	Female Part #	Fig. #
.031/(.79)	.015/(.38)	.046/(1.17)	KEA015-131G	KES015-210MG	1
.031/(.79)	.015/(.38)	.046/(1.17)	KEA015-525G	KES015-210MG	2
.031/(.79)	.031/(.79)	.062/(1.57)	KEA015-131G	KES015-85MG	1
.031/(.79)	.031/(.79)	.062/(1.57)	KEA015-525G	KES015-85MG	2
.050/(1.27)	.015/(.38)	.065/(1.65)	KEA015-526G	KES015-210MG	2
.050/(1.27)	.031/(.79)	.081/(2.06)	KEA015-526G	KES015-85MG	2
.070/(1.78)	.015/(.38)	.085/(2.16)	KEA015-321G	KES015-210MG	1
.050/(1.27)	.043/(1.09)	.093/(2.36)	KEA015-526G	KES015-246MG	2
.085/(2.16)	.015/(.38)	.100/(2.54)	KEA015-322G	KES015-210MG	1
.070/(1.78)	.031/(.79)	.101/(2.57)	KEA015-321G	KES015-85MG	1
.085/(2.16)	.031/(.79)	.116/(2.95)	KEA015-322G	KES015-85MG	1

15 position dual row part numbers shown.  
See How To Order section for ordering information.

If required "A" dimension is not shown, consult factory.

## Peel-A-Way® Removable Carriers



1. Place socket on PC board.
2. Send PC board and socket through soldering operation.
3. Peel away polyimide film carrier for complete solder joint visibility or leave in place for added stability.

## Available Online:

- RoHS Qualification Test Report



5 Energy Way, West Warwick, RI 02893 USA  
Tel: 800.424.9850 | 401.823.5200  
Fax: 401.823.8723  
info@advanced.com | www.advanced.com  
Cat. 16 Rev. 1