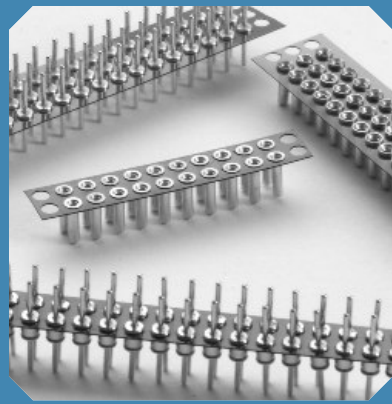


# Board to Board Connectors



## Features:

- Supplied in high temperature Peel-A-Way® removable terminal carrier.
- Male and female connectors are designed in mating pairs.
- .079/(2.00mm) row to row pitch.
- High reliability screw-machined terminals with closed-end construction for 100% anti-wicking of solder.
- For surface mount board to board options consult factory.
- Reliable mechanical support.
- Custom configurations available.

## Specifications:

### Terminals:

Brass - Copper Alloy  
(C36000) ASTM-B-16

### Contacts:

Beryllium Copper  
(C17200) ASTM-B-194

### Plating:

G - Gold over Nickel  
M - Matte Tin over Nickel  
T - Tin/Lead over Nickel

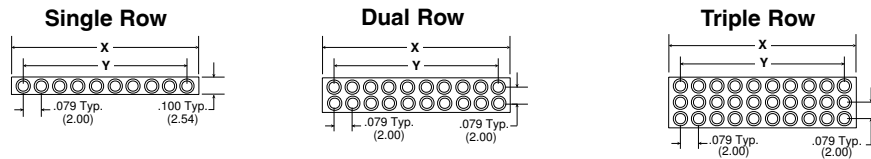
Gold per MIL-G-45204  
Matte Tin per ASTM545-97  
Tin/Lead per MIL-P-81728  
Nickel per QQ-N-290

# Board to Board Connectors .079/(2.00mm) Pitch • Peel-A-Way®

## Table of Models

	Single Row	Dual Row	Triple Row	
Female				Description: Peel-A-Way® (KMS, KMD, KMT) Material: Polyimide Film Index: -269°C to 400°C (-452°F to 752°F)
	KMS	KMD	KMT	
	Male			
KMA		KMB	KMC	

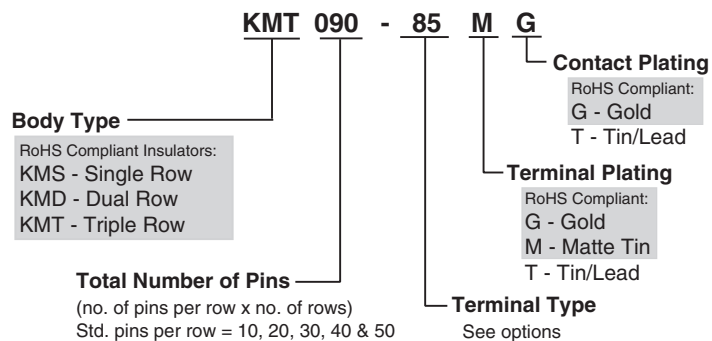
## Dimensional Information



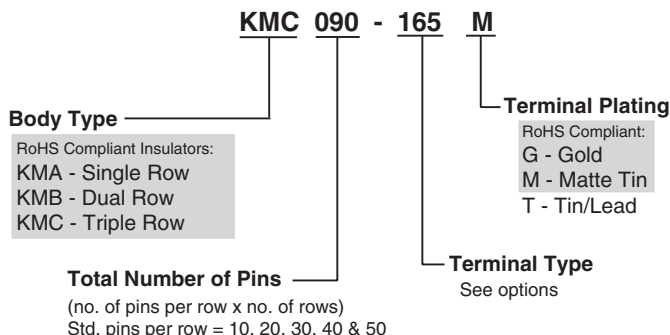
Order Total # of Pins			# of Pins Per Row	X in. (mm)	Y in. (mm)
Single	Dual	Triple			
010	020	030	10	.866 (22.00)	.709 (18.00)
020	040	060	20	1.654 (42.00)	1.496 (38.00)
030	060	090	30	2.441 (62.00)	2.283 (58.00)
040	080	120	40	3.228 (82.00)	3.071 (78.00)
050	100	150	50	4.016 (102.00)	3.858 (98.00)

## How To Order

### Female



### Male



5 Energy Way, West Warwick, RI 02893 USA  
Tel: 800.424.9850 | 401.823.5200  
Fax: 401.823.8723  
info@advanced.com | www.advanced.com  
Cat. 16 Rev. 1

Note: Terminals plated with Matte Tin are available only with Gold plated contacts.  
Quick-Turn delivery is not available on products with Matte Tin plating.

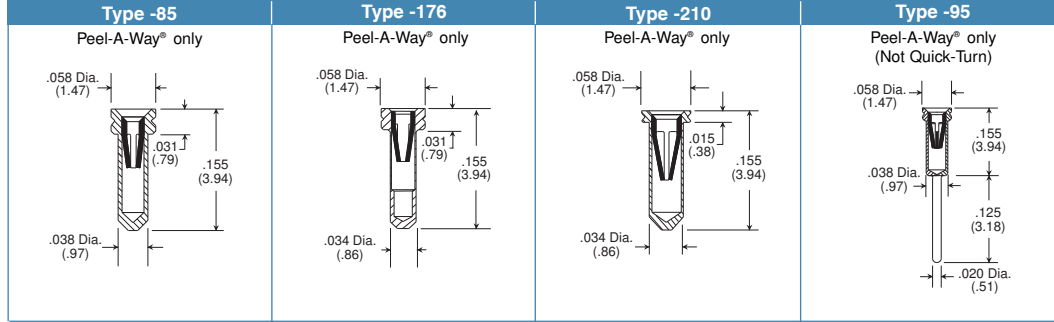
Products shown covered by patents issued and/or pending. Specifications subject to change without notice.

inch/(mm)

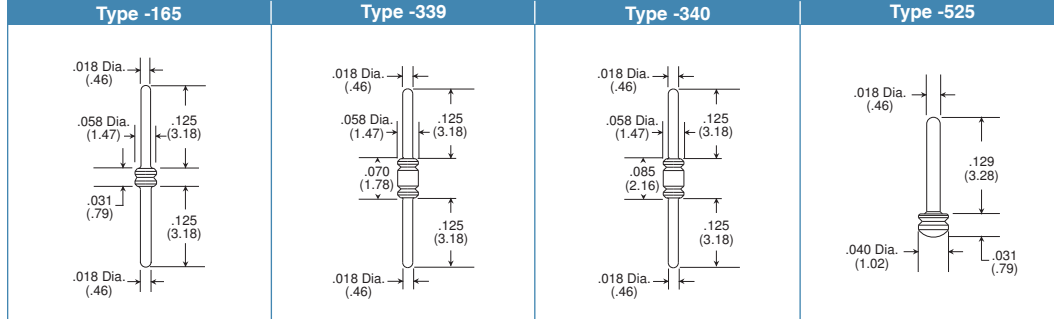


Additional standard and custom terminals available. See Terminals section or consult factory.

## Standard Female Quick-Turn Terminals

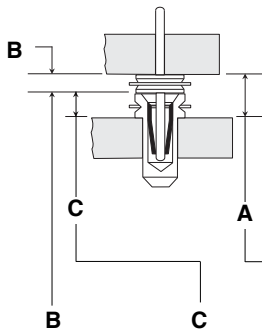


## Standard Male Terminals

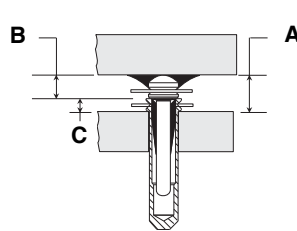


## Dimensional Information

**Figure 1**  
Thru-Hole



**Figure 2**  
Surface Mount



Order one each Male & Female to get the required "A" dim.

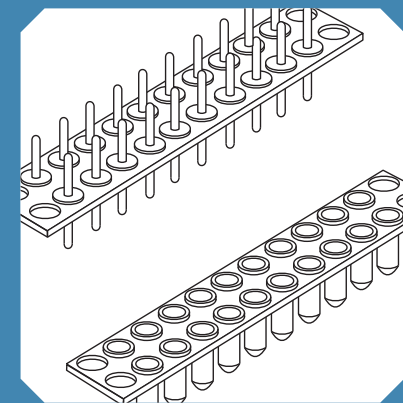
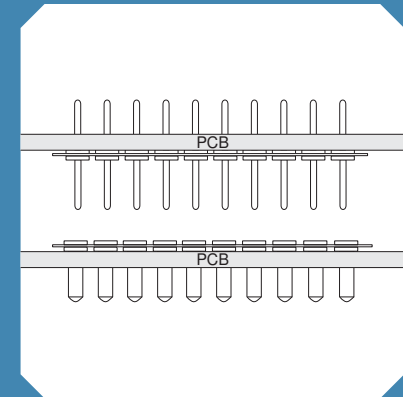
in./(mm)	in./(mm)	in./(mm)	Male Part #	Female Part #	Fig. #
.031/(.79)	.015/(.38)	.046/(1.17)	KMB020-165G	KMD020-210MG	1
.031/(.79)	.015/(.38)	.046/(1.17)	KMB020-525G	KMD020-210MG	2
.031/(.79)	.031/(.79)	.062/(1.57)	KMB020-165G	KMD020-85MG	1
.031/(.79)	.031/(.79)	.062/(1.57)	KMB020-525G	KMD020-85MG	2
.031/(.79)	.031/(.79)	.062/(1.57)	KMB020-165G	KMD020-176MG	1
.031/(.79)	.031/(.79)	.062/(1.57)	KMB020-525G	KMD020-176MG	2
.070/(1.78)	.015/(.38)	.085/(2.16)	KMB020-321G	KMD020-210MG	1
.085/(2.16)	.015/(.38)	.100/(2.54)	KMB020-322G	KMD020-210MG	1
.070/(1.78)	.031/(.79)	.101/(2.57)	KMB020-321G	KMD020-85MG	1
.070/(1.78)	.031/(.79)	.101/(2.57)	KMB020-321G	KMD020-176MG	1
.085/(2.16)	.031/(.79)	.116/(2.95)	KMB020-322G	KMD020-85MG	1
.085/(2.16)	.031/(.79)	.116/(2.95)	KMB020-322G	KMD020-176MG	1
.031/(.79)	.155/(3.94)	.186/(4.72)	KMB020-165G	KMD020-95MG	1
.031/(.79)	.155/(3.94)	.186/(4.72)	KMB020-525G	KMD020-95MG	2
.070/(1.78)	.155/(3.94)	.225/(5.72)	KMB020-321G	KMD020-95MG	1
.085/(2.16)	.155/(3.94)	.240/(6.10)	KMB020-322G	KMD020-95MG	1

20 position dual row part numbers shown. See How To Order section for ordering information.

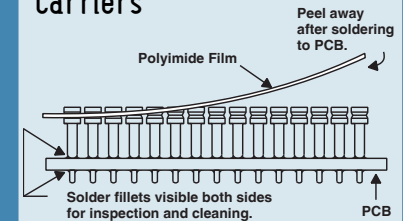
If required "A" dimension is not shown, consult factory.

inch/(mm)

Products shown covered by patents issued and/or pending. Specifications subject to change without notice.



## Peel-A-Way® Removable Carriers



1. Place socket on PC board.
2. Send PC board and socket through soldering operation.
3. Peel away polyimide film carrier for complete solder joint visibility or leave in place for added stability.

## Available Online:

- RoHS Qualification Test Report



5 Energy Way, West Warwick, RI 02893 USA  
Tel: 800.424.9850 | 401.823.5200  
Fax: 401.823.8723  
info@advanced.com | www.advanced.com  
Cat. 16 Rev. 1