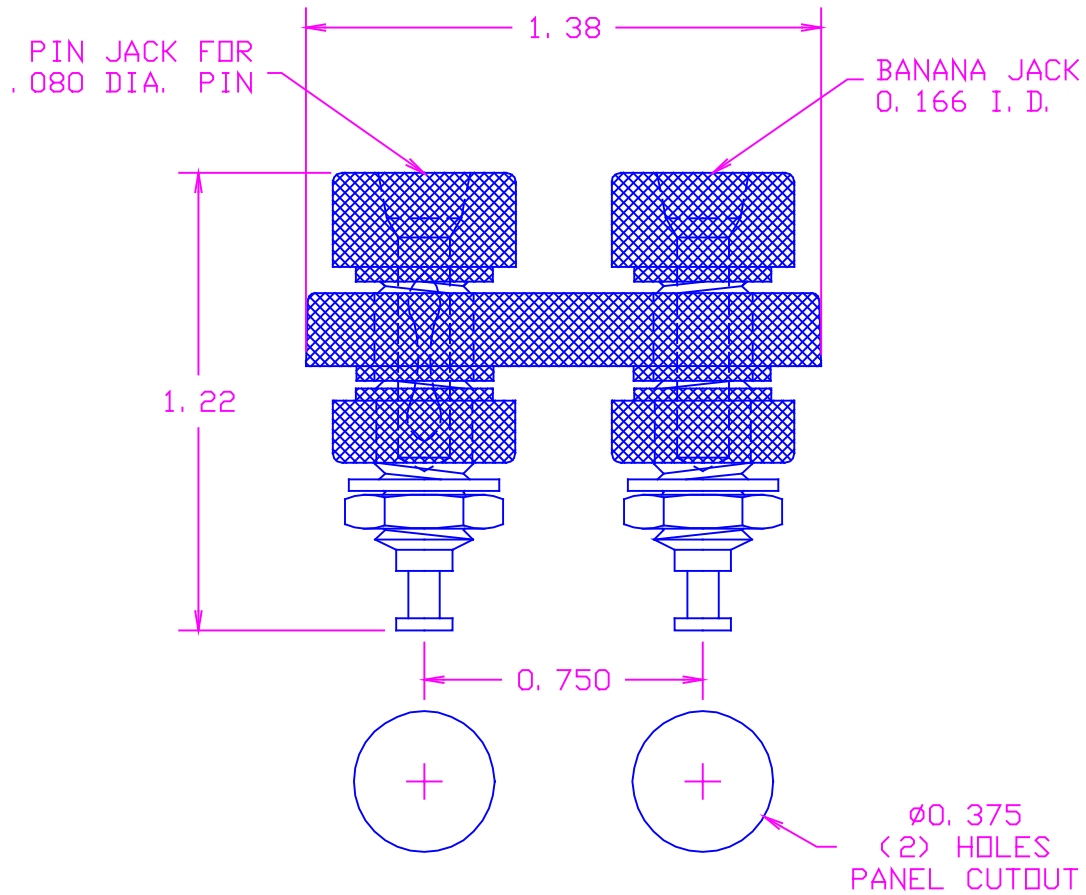
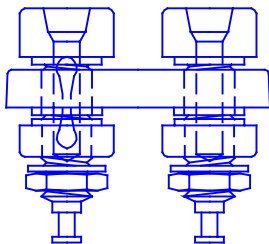


DATE	SYM	REVISION	RECORD	AUTH.	DR.	CK.
6/7/99	-	ISSUED			NT	DG



MATERIAL: PIN JACK(MOLDED IN BLACK POLYCARCONATE)-  
 JACK BODY- BRASS , BRIGHT TIN PLATED  
 SPRING- BERYLLIUM COPPER, GOLD PLATED  
 BANANA JACK(MOLDED IN RED POLYCARBONATE)-  
 BODY- BRASS, BRIGHT TIN PLATED  
 PLATES- POLYCARBONATE(10-BLACK, 12-RED)  
 HEX NUT- 1/4x3/8x3/32 BRASS, NICKEL PLATED  
 LOCKWASHER- PHOSPHOR BRONZE, NICKEL PLATED

ACTUAL SIZE



TOLERANCES (EXCEPT AS NOTED)	CONCORD		ELECTRONICS CORPORATION
DECIMAL ± .005	P/N	SCALE	30 GREAT JONES ST. NEW YORK N. Y. 10012
FRACTIONAL ± 1/64	TITLE POLARIZED DOUBLE JACK		
ANGULAR ± 5°	DATE 6/7/99	DRAWING NUMBER 25-9234-1-044XX	