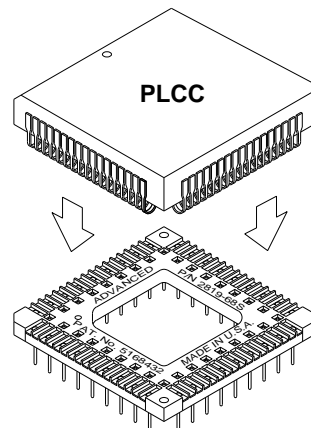
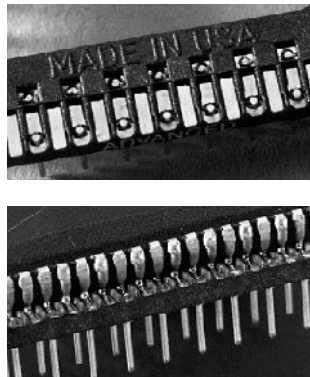
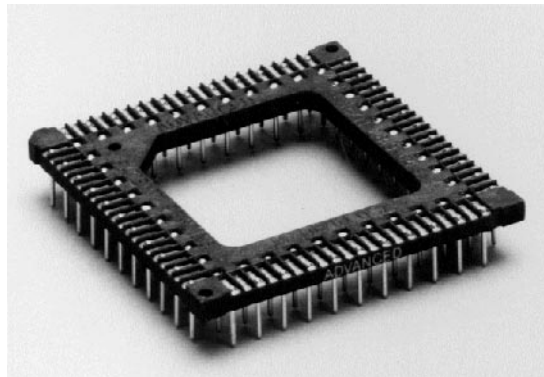


Adapters for Jedec .050" (1.27mm) Pitch PLCC's (Leaded Type A)

Features:

- Adapter allows present PLCC devices to be solderable or socketable in a thru-hole application.
- Molded locating ribs aid in device placement.
- Ribs between "J" leads eliminate shorting.
- Adapts JEDEC PLCC packages to standard PGA footprints.
- .100" (2.54mm) pin to pin spacing allows more space for conductor runs on PCB.
- Polarization pin option available.
- Saves space (X, Y, and Z) when used with Advanced PGA (LIF) sockets.
- Allows testing with standard test clips.
- Standoffs aid soldering operation.
- See pages 32-35 for mating sockets information.

Body Material:

High Temp Glass Filled Thermoplastic, U.L.
Rated 94V-O, -60°C to 220°C (-76°F to 428°F)

Terminal:

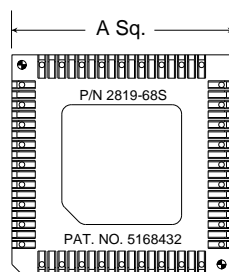
Brass - Copper Alloy (C36000), ASTM-B-16,
Tin-Lead Plated

Circuit:

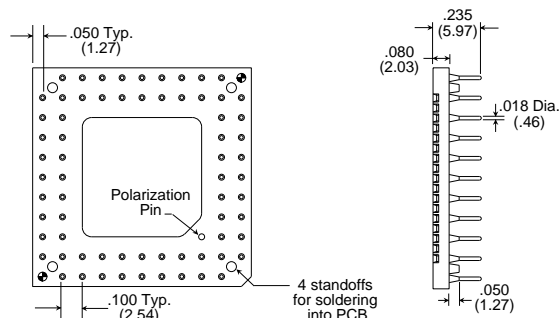
Copper Circuit, Tin-Lead Plated



Device to Adapter Soldering Service
Available by Advanced Interconnections



Top View of Adapter
(68 Pin Shown)



Bottom View of Adapter
(68 Pin Shown)

Part Numbers			
With Standoffs	With Polarization Pin & Standoffs	No. of Positions	A
2819-28S	2819-28SP	28	.500 (12.70)
2819-44S	2819-44SP	44	.800 (20.32)
2819-52S	2819-52SP	52	.900 (22.86)
2819-68S	2819-68SP	68	1.100 (27.94)
2819-84S	2819-84SP	84	1.300 (33.02)
2819-100S	2819-100SP	100	1.500 (38.10)
2819-124S	2819-124SP	124	1.800 (45.72)

Also available without standoff. For more information consult factory.

Murphy Circuits® is covered by patent rights issued and/or pending.